

3 Bed Detached

Chester-le-Street, Co.Durham, United Kingdom



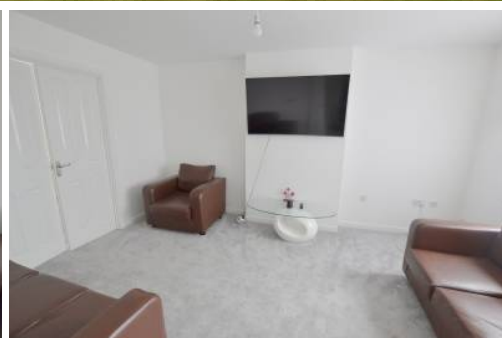
Offers in excess of £189,950



3 Bedrooms



2.0 Bathrooms



Detached

Property Description

This Property is now SOLD (STC)

Keyhole Residential are delighted to welcome to the sale market this fantastic three bedroom detached family home situated in Chester Burn Close on the popular Bellway development in Pelton Fell, Chester-Le-Street.

Offered with the convenience of no onward chain, this well positioned home is located on a generous plot near to the edge of the estate with an open outlook to the front across a grassed area. A beautifully appointed home, the property boasts generous room dimensions, en-suite facilities to the master bedroom, a separate lounge and dining room, downstairs wc and a generous rear garden with driveway and garage.

Pelton Fell is ideally located within a 5 minute drive of Chester-le-Street town centre, which offers several well regarded schools along with an abundance of services, amenities, bars and restaurants and is also located on the East Coast main railway line. Additionally, being only a 5 minute drive from the A1(M), this fantastic home is ideally positioned for travelling across the North East region and beyond.

Full Description

Entrance Hallway

Double glazed door leading to hallway, stairs to first floor, access to downstairs wc, storage cupboard, vinyl flooring.

Downstairs WC

Double glazed window, low level wc, wash hand basin, radiator, vinyl flooring.

Lounge

Double glazed window, radiator, television and telephone point, carpet flooring.

(Room Size: 4.4m x 3.2m)

Kitchen

Double glazed window, radiator, fitted wall and base units, roll top work surfaces, stainless steel sink unit with mixer tap, integrated electric oven, integrated gas hob with extractor hood, plumbed for washing machine, vinyl flooring.

(Room Size: 3.4m x 2.5m)

Dining Room

Double glazed French doors, radiator, carpet flooring.

(Room Size: 3.3m x 2.9m)

First Floor Landing

Carpet flooring, storage cupboard, loft access.

Bedroom One

Double glazed window, radiator, carpet flooring.

(Room Size: 3.9m x 3.2m)

En-Suite

Low level wc, pedestal wash hand basin, double shower cubicle, radiator, vinyl flooring.

(Room Size: 2.4m x 1.4m)

Bedroom Two

Double glazed window, fitted wardrobes, radiator, carpet flooring.

(Room Size: 3.2m x 2.1m)

Bedroom Three

Double glazed window, radiator, fitted wardrobes, carpet flooring.

(Room Size: 3.1m x 2.5m)

Bathroom

Double glazed window, low level wc, pedestal wash hand basin, bath with shower over, radiator, part tiled walls, vinyl flooring.

(Room Size: 2.5m x 1.4m)

Rear Garden

Enclosed rear garden with gated access leading to driveway and garage, patio area.

Garage & Driveway

Front Garden

EPC Rating: C

Tenure: Freehold

Disclaimer: These particulars do not constitute a contract or part of a contract. Keyhole Residential Limited endeavour to maintain accurate depictions of properties in virtual tours, floor plans and descriptions however, these are intended only as a guide and purchasers must satisfy themselves by inspection or otherwise as to their accuracy. No person in this firm's employment has the authority to make or give any representation or warranty in respect of the property. All dimensions are approximate and the mention of fixtures and fittings and/or appliances does not imply that they are in full working order or part of any sale.

Photo Gallery





Property Details

- **Property Type:** Detached
- **Location:** Chester-le-Street, Co.Durham, United Kingdom
- **Price: Offers in excess of £189,950**
- **Bedrooms:** 3
- **Bathrooms:** 2.0

Property Features

- Central Heating
- Garage
- Garden
- Double Glazing